



# Orion-O User Manual



Orion-O Version 1.5.8.5  
Document Version: 1.5.8.1  
November 2014

**Copyright © 2005-2014, SURF Communication Solutions Ltd.**

This document contains confidential and proprietary information of SURF Communication Solutions Ltd., henceforth referred to as "SURF." All rights reserved. No part of this documentation may be reproduced in any form or by any means or used to make any derivative work (such as translation, transformation, or adaptation) without written permission from SURF Communication Solutions.

SURF reserves the right to revise this document, and to make changes therein, from time to time without providing notification of such revision or change.

This document contains descriptive information regarding the subject matter herein, and is not an offer to purchase or license any products or services of, or from SURF. SURF expressly disclaims any and all representations or warranties, expressed or implied herein, including but not limited to warranties of merchantability or fitness for a particular purpose. The licensing or sale of any product or service by or of SURF shall only be made in accordance with, and subject to the terms of, an agreement for the relevant product or service, to be signed by both the customer and SURF or its authorized agent or representative. Consequently, SURF shall carry no liability to any such customer based on this document, the information contained herein, or the omission of any other information.

**Trademarks**

The name "SURF Communication Solutions" is a registered trademark of SURF Communication Solutions Ltd.

Any other trademarks, trade names, service marks or service names owned or registered by any other company and used herein are the property of their respective owners.

SURF Communication Solutions, Ltd.

Rabin House, Misgav Industrial Park, Israel 20174

POB 66, D.N. Misgav 20174

Tel: +972 (0)73 714-0700

Fax: +972 (0)4 959-4055

Web site	<a href="http://www.orionmcu.com/">http://www.orionmcu.com/</a>
Email	<a href="mailto:orion@surfsolutions.com">orion@surfsolutions.com</a>

# Table of Contents

---

<b>1.</b>	<b>Overview .....</b>	<b>4</b>
<b>2.</b>	<b>System requirements .....</b>	<b>5</b>
<b>3.</b>	<b>Installation .....</b>	<b>6</b>
<b>4.</b>	<b>Login Screen .....</b>	<b>7</b>
<b>5.</b>	<b>Joining a Conference .....</b>	<b>9</b>
<b>6.</b>	<b>Dialing Options .....</b>	<b>11</b>
<b>7.</b>	<b>Application Settings .....</b>	<b>13</b>
7.1	Preferences .....	14
7.1.1	Network .....	14
7.1.2	Multimedia.....	14
7.1.3	Bandwidth Control .....	15
7.2	SIP User .....	16

# 1. Overview

---

Optimized to be used with SURF's Orion-VX1000/VX2000 infrastructure video conferencing solution, Orion-O provides mobile connectivity solutions to the onsite video conferencing solution provided by the Orion-VX1000/VX2000.

Orion-O provides the following benefits:

- ◆ Simple to use connectivity for voice or video communication solution from any network for a true collaborative experience
- ◆ Open standard based (SIP, H.264) protocols allow connectivity to most enterprise gateways and systems through the Orion-VX1000/VX2000 video conferencing solution
- ◆ Simple and easy to use application
- ◆ Optimized for Apple iPhone, iPad, Android and Windows

This manual provides detailed guidance on the use of the Orion-O, SURF's video conferencing soft-client, on Windows machines. It includes a description of the product, its functionality, features, settings, and operation.

## **Feedback:**

The SURF Technical Support Center is at your service. You may access Warranty Service through our Web Request Form by using the following link: [www.orionmcu.com/support](http://www.orionmcu.com/support)

We are committed to constant and perpetual improvement. Your input will greatly help us in our endeavor.

## 2. System requirements

---

- ◆ Windows XP
- ◆ Windows 7
- ◆ Windows 8

## 3. Installation

---

- Orion-O client application can be downloaded from our Web site (<http://www.orionmcu.com/partner-area/> (located in the Orion-O tab))
- In order to use Orion-O, the license (activation key) needs to be registered.

Notes:

Key registration is performed only once.

Each key is unique, designed for use with a specific operating system, and can be used only once on a single PC.

- For successful key registration, make sure to have Internet connectivity while running Orion-O for the first time.



Figure 1: License screen

## 4. Login Screen

Run the Orion-O video conferencing soft-client from your Windows. Login screen is opened Figure

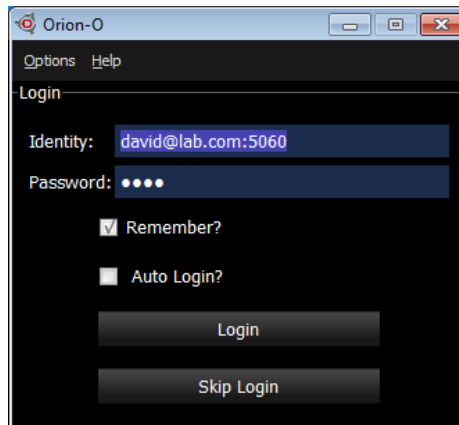


Figure 2: Login

### → To Login:

- ◆ Enter your user name and password in the “**Identity**” and “**Password**” fields, respectively. **Identity** needs to be input in one of the following formats:
  - <username>@<domain>:<port>
  - <username>@<IP address>:<port>username can be a number or a string  
default port is 5060
- ◆ When the “Remember?” checkbox is checked, the application remembers your password for the future entries.
- ◆ When the “**Auto Login?**” box is checked, the application will not display the login screen and the user is logged-in automatically. If the “**Auto Login**” box is checked, the “**Remember**” box should be checked as well.
- ◆ Click on the “**Login**” button to enter the dialing screen.  
If the Identity or Password values have incorrect syntax, the following message will appear:

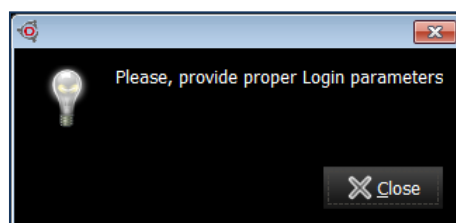


Figure 3: Incorrect login syntax

In order to change the Login parameters, the SIP user screen can be used as well (see section 7.2).

→ **To skip the registration: Press Skip Login**

In this case the Orion-O does not register to a registrar. The **Current Status** button at the top-left of the screen will appear grayed out.

See Table 6-3 for the dialing options of an unregistered SIP user.



## 5. Joining a Conference

Following the login operation, the Orion-O dialing screen appears. Note that the **Current Status** is green denoting a successful login. If Current Status is red, logout, check the **Identity** and **Password** and login again. Figure 4 shows the dialing screen:

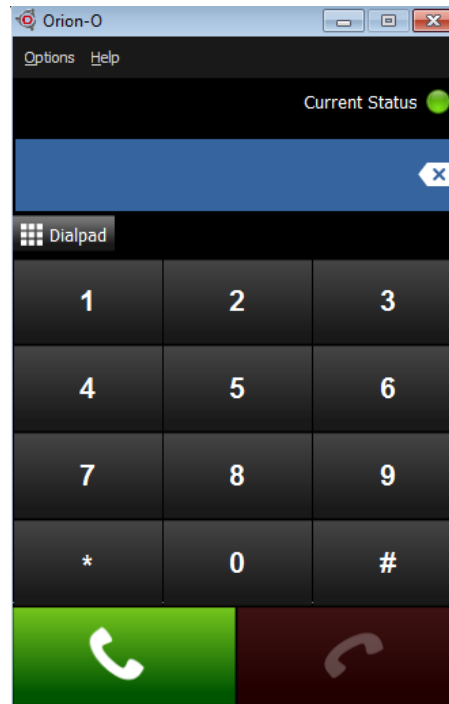


Figure 4: Dialing Screen

### → To join a conference:

- ◆ Edit or enter the pre-registered conference name or number. For dialing options see section 6.
- ◆ Press the green dialing button.

### → To share a content with the other participants:

- ◆ Check that your webcam is on.
- ◆ Check that the device recognizes your camera by checking the **Video input device** drop-down list (by selecting Options-> Preferences-> Multimedia).
- ◆ Press the **Start Screen Sharing** button, as shown in the figure below:
  - Note: Screen sharing is available in the Windows version only and is not supported in the Android and iOS Orion-O versions.

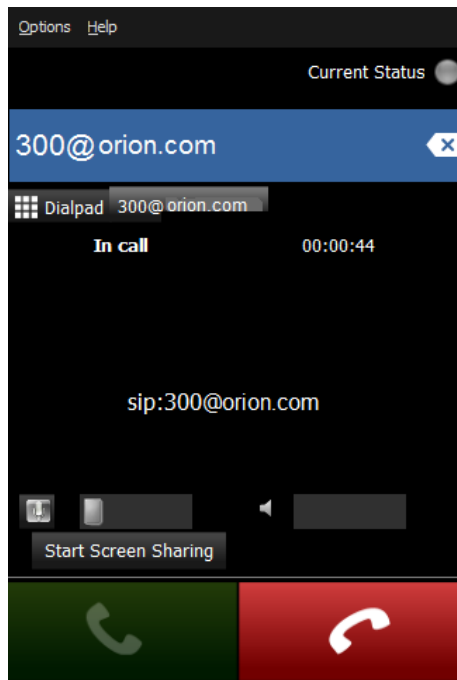


Figure 5: Screen Sharing

➔ **To stop the screen sharing:**

- ◆ Press **Stop Screen Sharing** button.

➔ **To terminate the call:**

- ◆ Press the red dialing button

## 6. Dialing Options

In order to join a conference, the user can use the access number or the conference number. The following tables show various dialing options per each choice, using the example below:

- ◆ Access Number – 500
- ◆ Conference Number – 100
- ◆ Participant PIN Code – 1
- ◆ Orion-VX1000/VX2000 Domain – Orion.com (Domain name or IP address)

### Participant is registered on PBX:

Dialing Option	PIN Code	Operations and Prompts
Access Number	√	Dial 500 – Prompt: <i>“Please enter your conference number followed by the # key”</i> Dial 100 – Prompt: <i>“Please enter the conference PIN number followed by the # key”</i> Dial 1 – Connected to conference
Conference Number	√	Dial 100 – Prompt <i>“Please enter the conference PIN number followed by the # key”</i> Dial 1 – Connected to conference
Access Number		Dial 500 – Prompt <i>“Please enter your conference number followed by the # key”</i> Dial 100 – Connected to conference
Conference Number		Dial 100 – Connected to conference

Table 6-1: Dialing Information - Registered on PBX

### Participant is registered on Orion-VX1000/VX2000 SIP Build-in Registrar:

Dialing Option	PIN Code	Operations and Prompts
Access Number	√	Dial 500 – Prompt <i>“Please enter your conference number followed by the # key”</i> Dial 100 – Prompt <i>“Please enter the conference PIN number followed by the # key”</i> Dial 1 – Connected to conference <b>Alternative option (Connecting without prompts):</b> Dial 500*100*1 – Connected to conference
Conference Number	√	Dial 100 – Prompt <i>“Please enter the conference PIN number followed by the # key”</i> Dial 1 – Connected to conference
Access Number		Dial 500 – Prompt <i>“Please enter your conference number followed by the # key”</i> Dial 100 – Connected to conference
Conference Number		Dial 100 – Connected to conference

Table 6-2: Dialing Information - Registered on Orion-VX1000/VX2000

**Participant is not registered:**

Dialing Option	PIN Code	Operations and Prompts
Access Number	√	Dial 500@Orion.com – Prompt <i>“Please enter your conference number followed by the # key”</i> Dial 100 – Prompt <i>“Please enter the conference PIN number followed by the # key”</i> Dial 1 – Connected to conference <b>Alternative option (Connecting without prompts):</b> Dial 500*100*1@Orion.com – Connected to conference
Conference Number	√	Dial 100@Orion.com – Prompt <i>“Please enter the conference PIN number followed by the # key”</i> Dial 1 – Connected to conference
Access Number		Dial 500@Orion.com – Prompt <i>“Please enter your conference number followed by the # key”</i> Dial 100 – Connected to conference
Conference Number		Dial 100@Orion.com – Connected to conference

**Table 6-3: Dialing Information - Not Registered**

## 7. Application Settings

→ To set the application's parameters: Press on Options. The Orion-O setting options appear, as shown below:

- ◆ **Preferences.** Sets the network, multimedia and bandwidth control parameters (see section 7.1).
- ◆ **SIP User.** Sets the user's identity and password, and the login characteristics (see section 2).
- ◆ **Logout.** Logs out from the system, enabling the user to login again. To login, enter the **SIP User** (see section 7.2).
- ◆ **Always start video.** When this check box is not checked, the conference starts without video and as a voice conference only.
- ◆ **Enable self-view.** When the enable self-view box is checked, an additional window opens, showing the image of the user. During active calls self-view will appear in the bottom righthand corner of the video screen.
- ◆ **Quit.** Quits the application

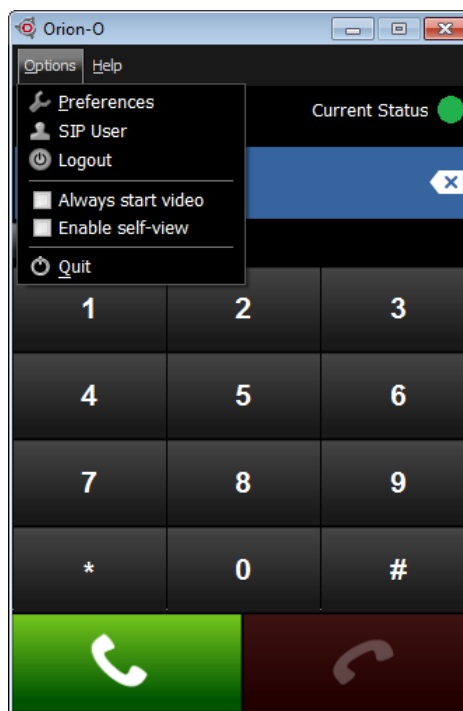


Figure 6: Options

## 7.1 Preferences

### 7.1.1 Network

→ For Network settings:

- ◆ Use the **SIP** drop-down menu to choose between:
  - SIP (UDP)
  - SIP (TCP)
  - SIP (TLS)
- ◆ Enter the **SIP** listening port
- ◆ Enter the **Audio RTP/UDP** port
- ◆ Enter the **Video RTP/UDP** port
- ◆ If you are not behind NAT/Firewall, check the **Direct connection to the Internet** box.
- ◆ If you are behind NAT/Firewall, check the **Behind NAT / Firewall** box.
- ◆ Enter your Public IP address.
- ◆ Press **Done** to save the changes and to exist the **Network** settings.

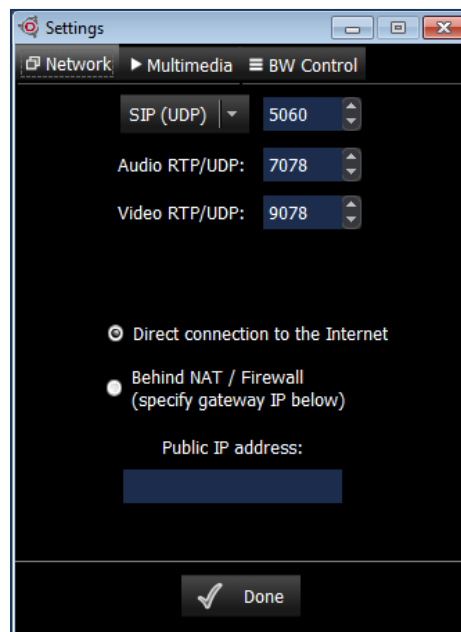


Figure 7: Network Settings

### 7.1.2 Multimedia

→ For the Multimedia settings:

The device options below depend on your device's available hardware.

#### Audio

- ◆ Choose your **Playback device** by using the drop-down menu
- ◆ Choose your **Ring device** by using the drop-down menu
- ◆ Choose your **Capture device** by using the drop-down menu

#### Video

- ◆ Use **Video input device** drop-down menu to choose between:
  - Directshow capture: CyberLink Web Camera Filter
  - Directshow capture; LG Webcam
  - StaticImage: Static picture
- ◆ Use **Preferred video resolution** drop-down menu to choose between:
  - HD720P (1280X720)
  - VGA (640x480)
  - CIF (352x288)
- ◆ Press **Done** to save the changes and to exist the **Multimedia** settings.

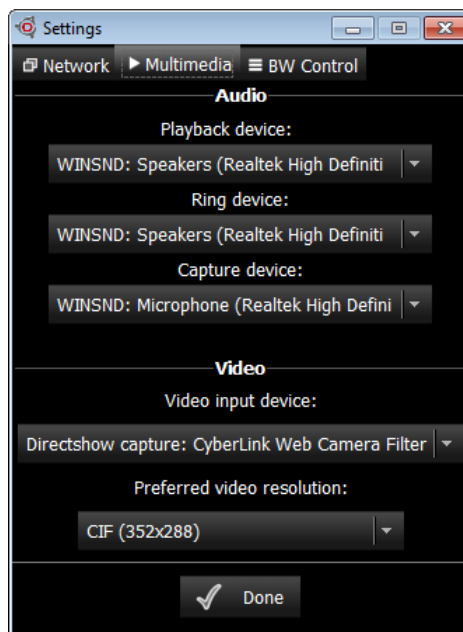


Figure 8: Multimedia

### 7.1.3 Bandwidth Control

#### → To set the Bandwidth Control:

- ◆ Insert the Download speed limit in Kbit/sec.  
Download speed limit is the maximum bit-rate from the network **to your device**.
- ◆ Insert the Upload speed limit in Kbit/sec  
Upload speed limit is the maximum bit-rate **from your device** to the network.  
Note that when the parameters above are set to zero, no limit has been set for the bit rate.
- ◆ To enable an **adaptive rate control**, check the box.  
Adaptive rate control manages the bit rate and does not allow the stream to exceed the entered values.
- ◆ Press **Done** to save the changes and to exist the **Bandwidth Control** settings.

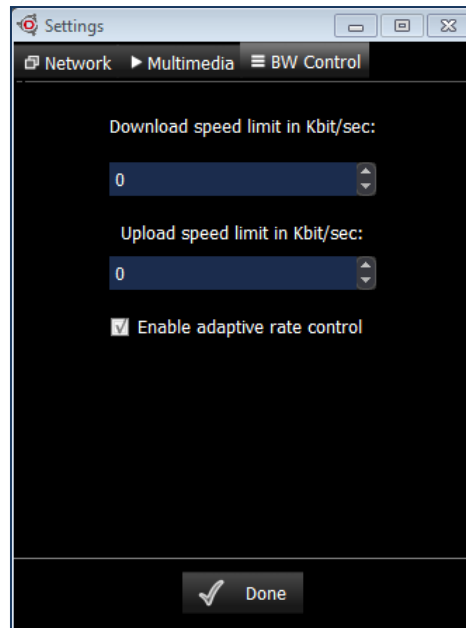


Figure 9: Bandwidth Control

## 7.2 SIP User

→ To edit the SIP User's login parameters, choose SIP User:

- ◆ Press **Logout**, to make the fields editable:
- ◆ Edit the login parameters, as described in the opening screen (see section 2).
- ◆ Enter the Outbound SIP proxy domain or IP address (optional). The following shows the syntax:
  - <domain>:<port>
  - <IP address>:<port>

Note: Configure the Outbound SIP proxy with the same IP address of the Registrar, or leave this field blank (preferred).

- ◆ Press **Login**



Figure 10: SIP User